

Story for Information

Visiting Wellington Museum

Introduction

Wellington Museum is a big building.

There are a lot of different things to see there.

There are 4 levels inside the Museum with different objects and things on display.

Wellington Museum will have a low sensory hour on the first Thursday of the month from 4pm – 5pm. The Museum will be quieter and lights not as bright.

If you come to visit Wellington Museum during the low sensory hour you can choose to go around the Museum at your own pace or with a Museum staff member.

There might be a group of people with the Museum staff member.

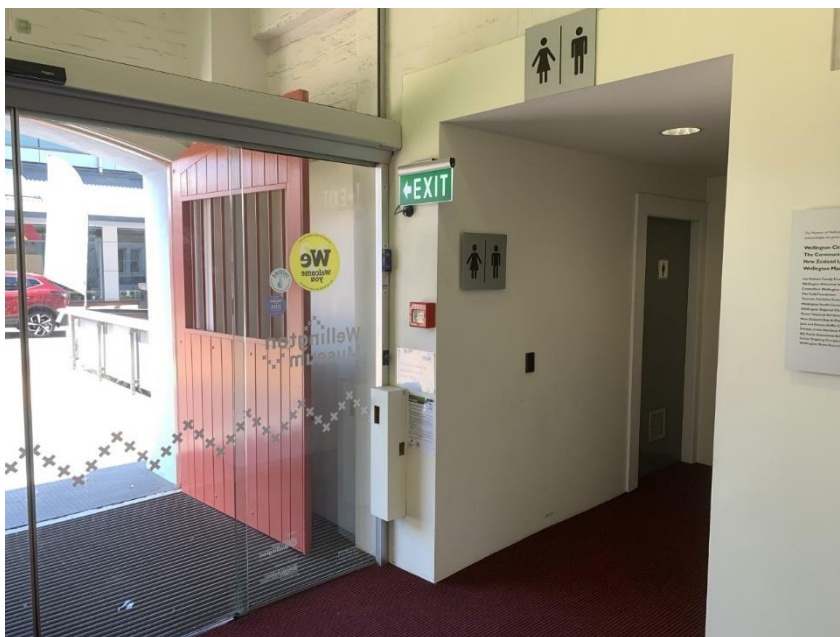


Entrance

When you arrive, you will enter through the Museum entrance.

You will walk through two sets of automatic glass doors to enter the Museum.

At the entrance there is a toilet that you can use if you need to. It is after the first set of automatic doors. Helpful staff can show you where it is if you need.



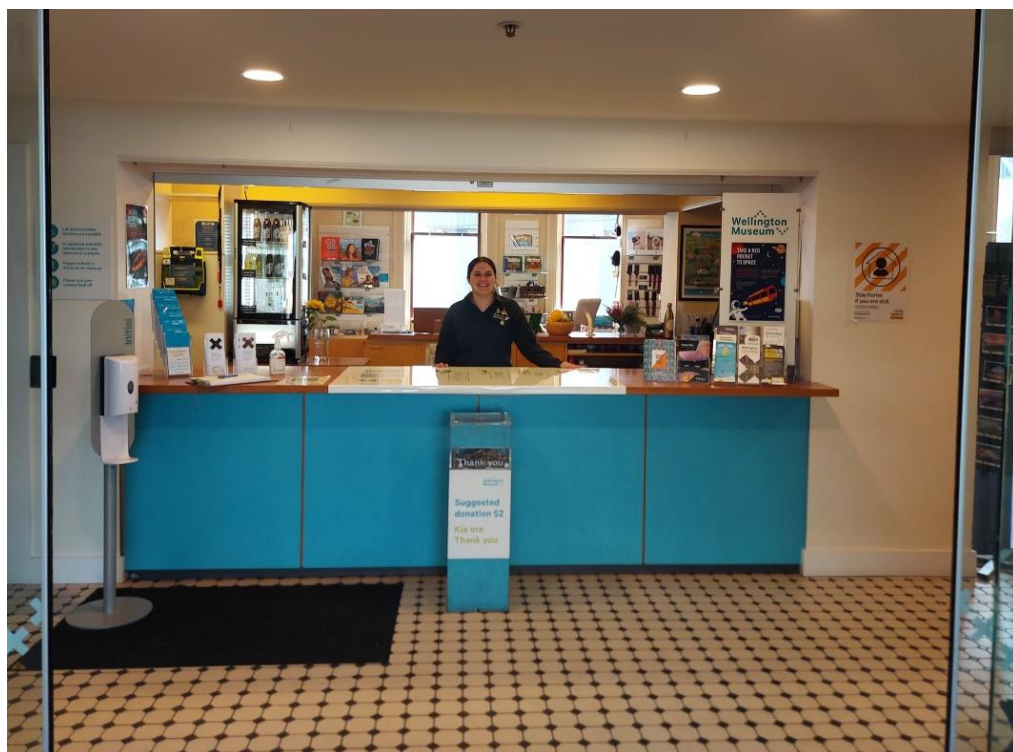
Front Desk

When visitors enter the building, they are greeted by our Visitor Services staff. They are here to help you if you need.

People can store their coats and bags here, and if they have any food or drink they will need to leave it here as there is no food or drink allowed in the exhibition areas.

The visitor services staff will keep your items safe.

You can collect your things when you are ready to leave.



Helpful Staff

There will always be a staff member at the front desk to help you if you need.

There will also be staff walking around the Museum who can help you.

You can ask them where quiet zones are, or questions about the Museum.

The staff might not always be the same.

Moving Around the Museum

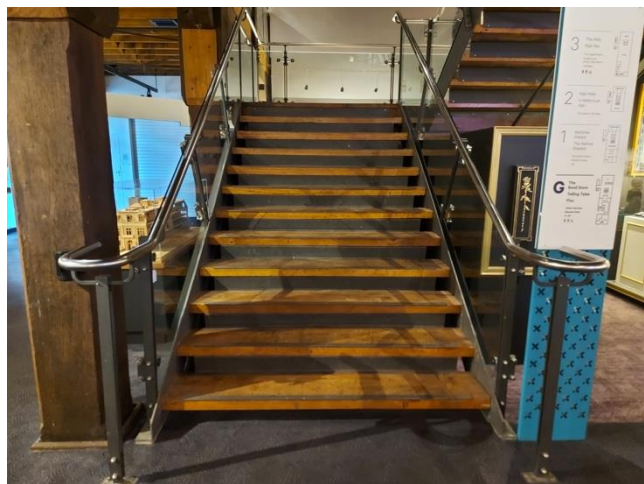
There are four different levels in the Museum. Ground Level, Level 1, Level 2 and The Attic.

Each level has different objects and displays you can look at.

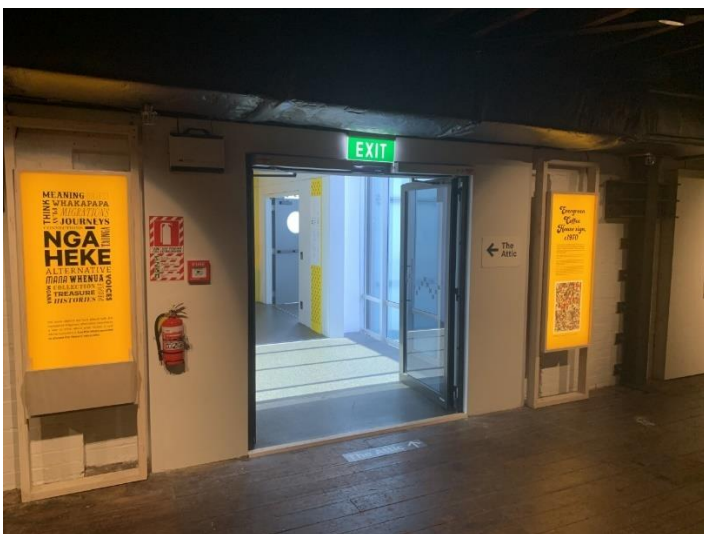
To get around the Museum you can use the lifts or the stairs. There is a recorded voice that tells you what level you are on when you are in the lift.

The lifts are located through the automatic doors on all four levels. The stairs are located in the center of the Museum.

The stairs in the center of the Museum only go as far as Level 2.



To get from Level 2 to the Attic you use the stairs located opposite the lift or get the lift.



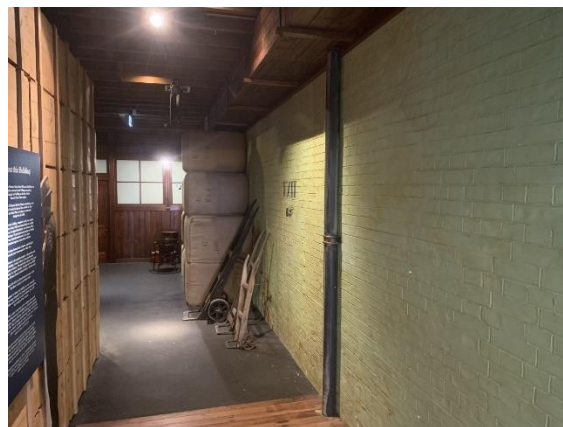
Entering the Museum

To enter the Museum's exhibitions you go through The Bond Store.

There is a big blue circle that shows you where The Bond Store starts.



If you find the blue circle is a bit bright, you can enter The Bond Store through an entrance on the other side of the front desk. This says exit on the wall, but don't worry you are allowed to enter this way.



Once you have entered The Bond Store you are inside the part of the Museum where the exhibits are displayed.

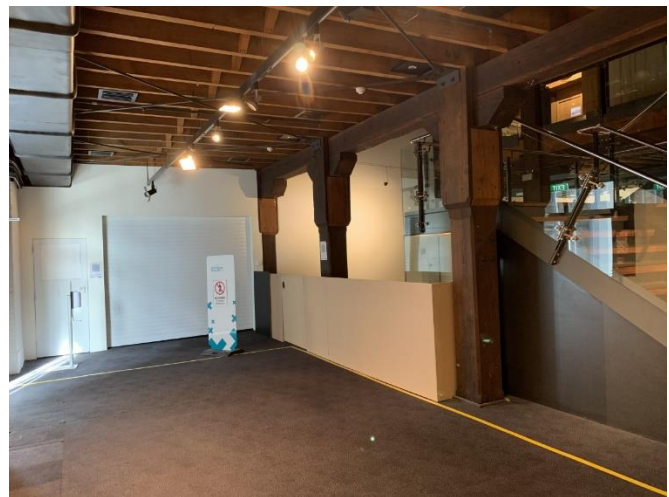
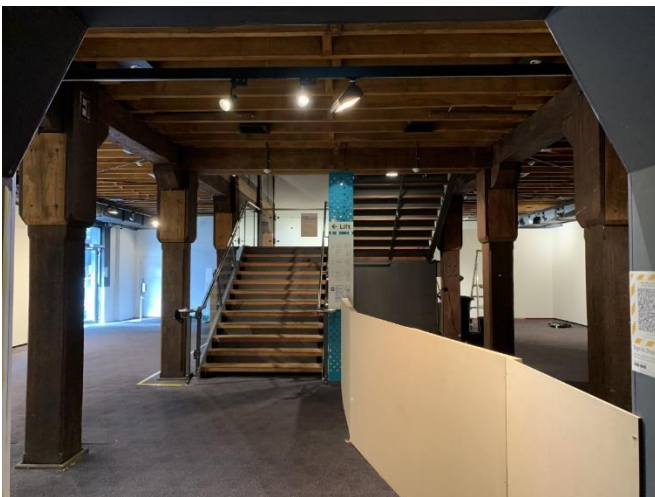
Ground Floor

The ground floor is where you will find helpful staff at front desk, The Bond Store and the space where Telling Tales used to be, this is now an empty space.

The Bond Store has lots of objects that show what things looked like in the 1890s. A fake rat might move along the top of the display by the fake cat.

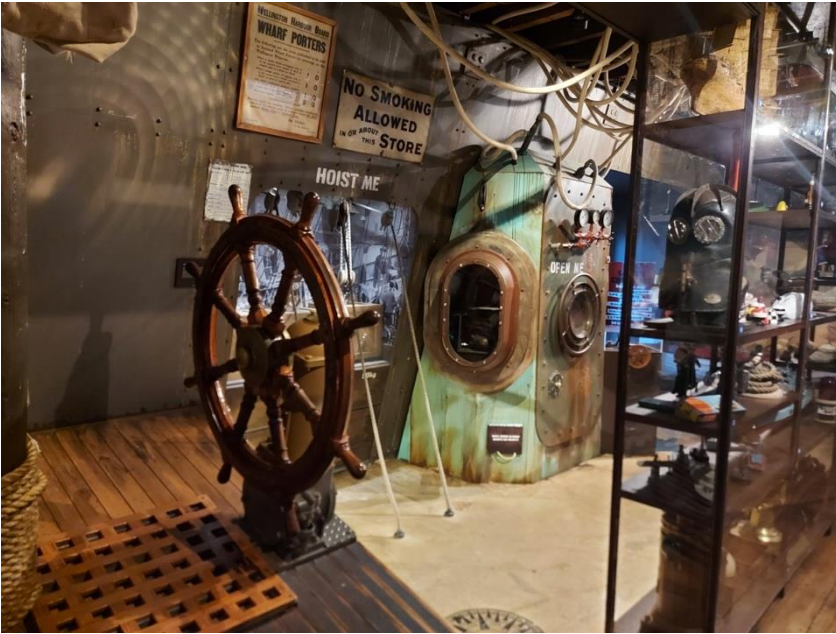


Telling Tales has been removed from Wellington Museum, and the space on the ground floor is now empty. This is a quiet space for you to walk through. The walking pathway is walled off, but you still have access to the stairs and lift.



Level 1

On Level 1 there are parts of the exhibition you can play with. Like the Captains Wheel in the ship. There are also some videos with different displays.



The Captains Cabin is on Level 1, if you want to you can go inside. There is also a model of the famous dog, Paddy the Wanderer.



Level 2

There are lots of different things to look at on Level 2, like the Tuku Tuku Panel.



On Level 2 there is a video called Millennium Ago. This will play at about 4.30pm. This video tells the story of some Māori Legends.

There are bright lights and loud noises at points during the video. There is also a trap door on the ceiling that will open suddenly to show a Taniwha.

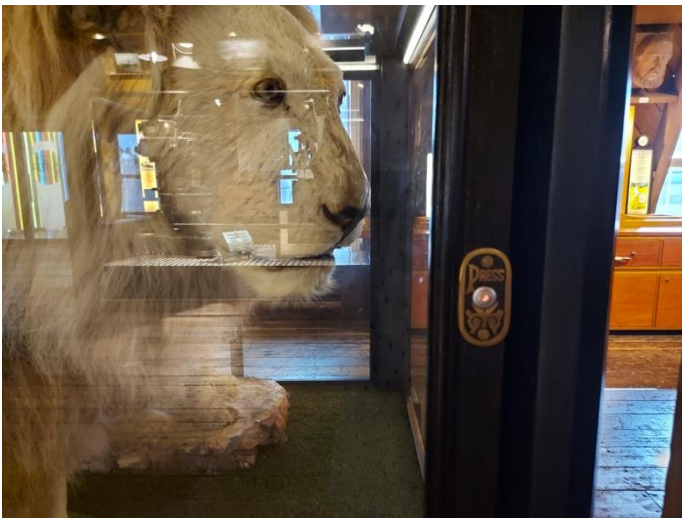


The Attic

The Attic has lots of different things to look at.



One of the displays has two taxidermy lions. If you press the button you can hear them roar. Other displays might make noise when you walk past it like the Paper Mache Giant, and if you listen on the old fashioned phone headsets you can hear things about a display.



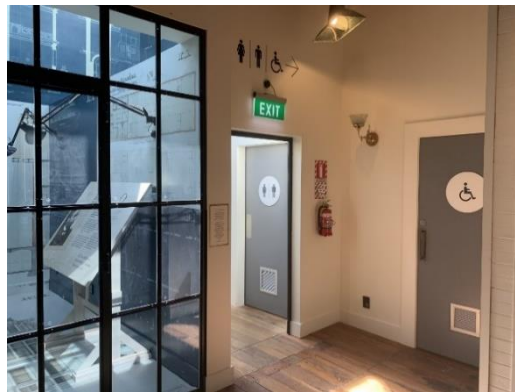
Quiet Zones

There are rooms on Level 1 and The Attic if you would like a quiet space to sit down and relax. When you visit there will be signs showing you the rooms.

On Level 1 the quiet zone is in the Wahine Disaster. This is a dimmed space where you can sit down. There will be a sign at the entrance to let you know it is a quiet zone.



The quiet zone in The Attic is called the Capital Room. You can close the door and sit down at the table. There is a toilet next to the capital room that you can use if you need to.



Leaving the Museum

The Museum closes for the day at about 5pm.

You can stay in the Museum up until 5pm and then it is time to go.

To leave the Museum you will take the lift or the stairs back to the ground floor.

Once you are on the ground floor you will go back through the empty space and The Bond Store to the front desk.



Once you are at the front desk you can collect your things from the front desk and exit through the two sets of automatic doors that you went through on your way into the Museum.

Thank you for visiting Wellington Museum!